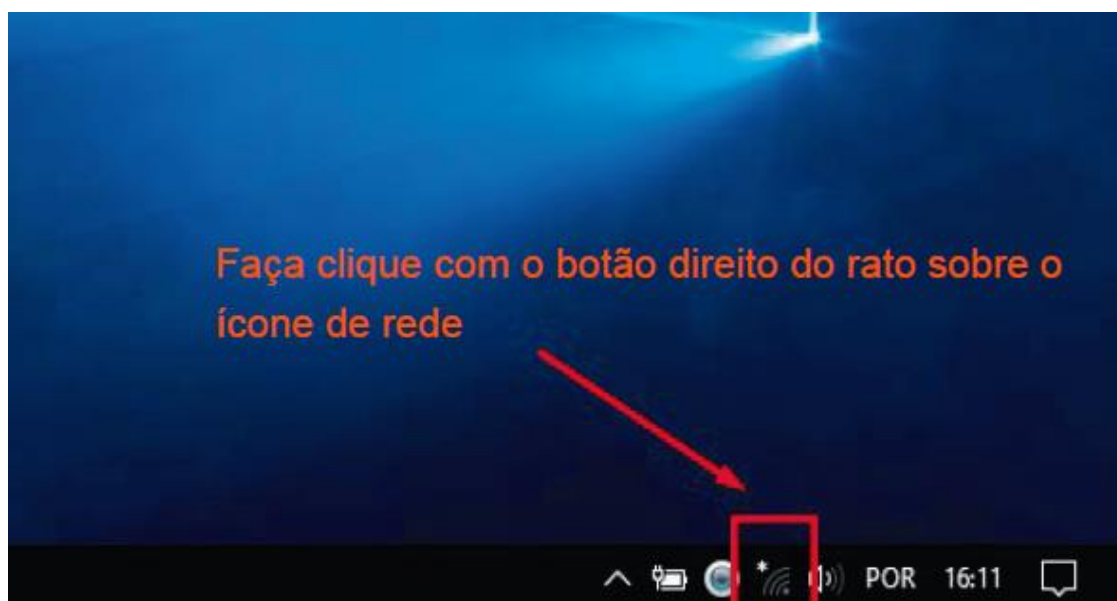


Configuração da rede eduroam em Windows 10

Passo 1

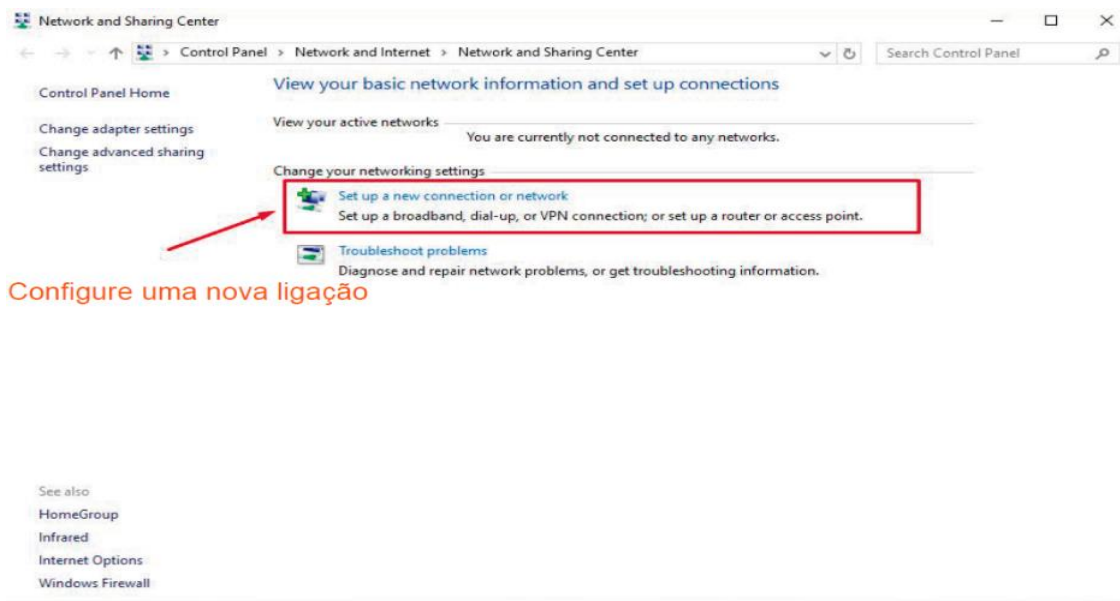


Passo 2

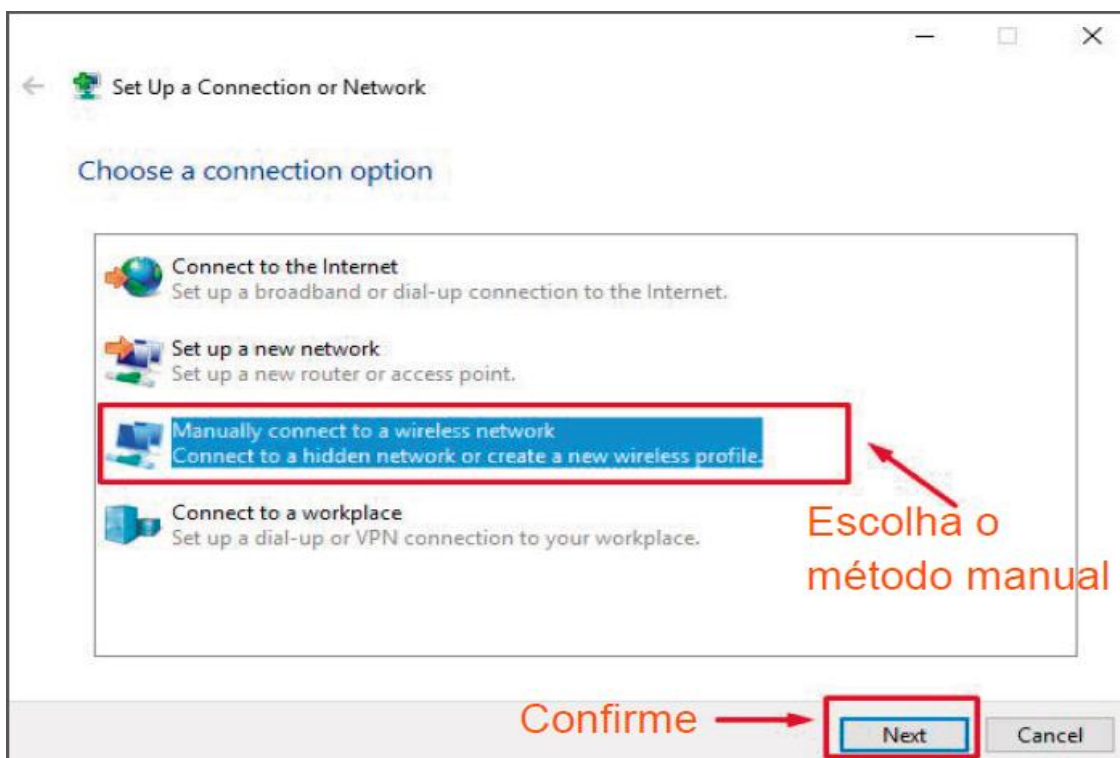


Documento de 21 de outubro de 2016

Passo 3



Passo 4



Passo 5

Manually connect to a wireless network

Enter information for the wireless network you want to add

Network name:

Security type: WPA2-Enterprise

Encryption type: No authentication (Open)
WEP
WPA2-Enterprise
WPA2-Personal
602.1X

Security Key: Hide characters

Start this connection automatically
 Connect even if the network is not broadcasting
Warning: If you select this option, your computer's privacy might be at risk.

Confirme

O nome da rede é "eduroam"

Escolha "WPA2 Enterprise"

Passo 6

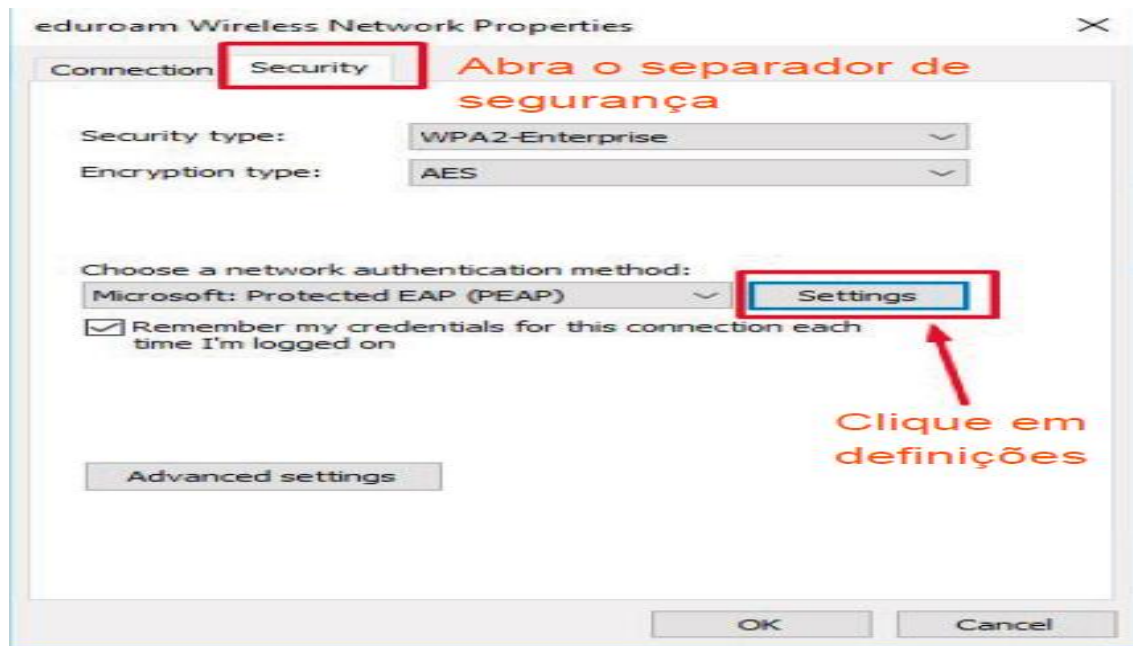
Manually connect to a wireless network

Successfully added eduroam

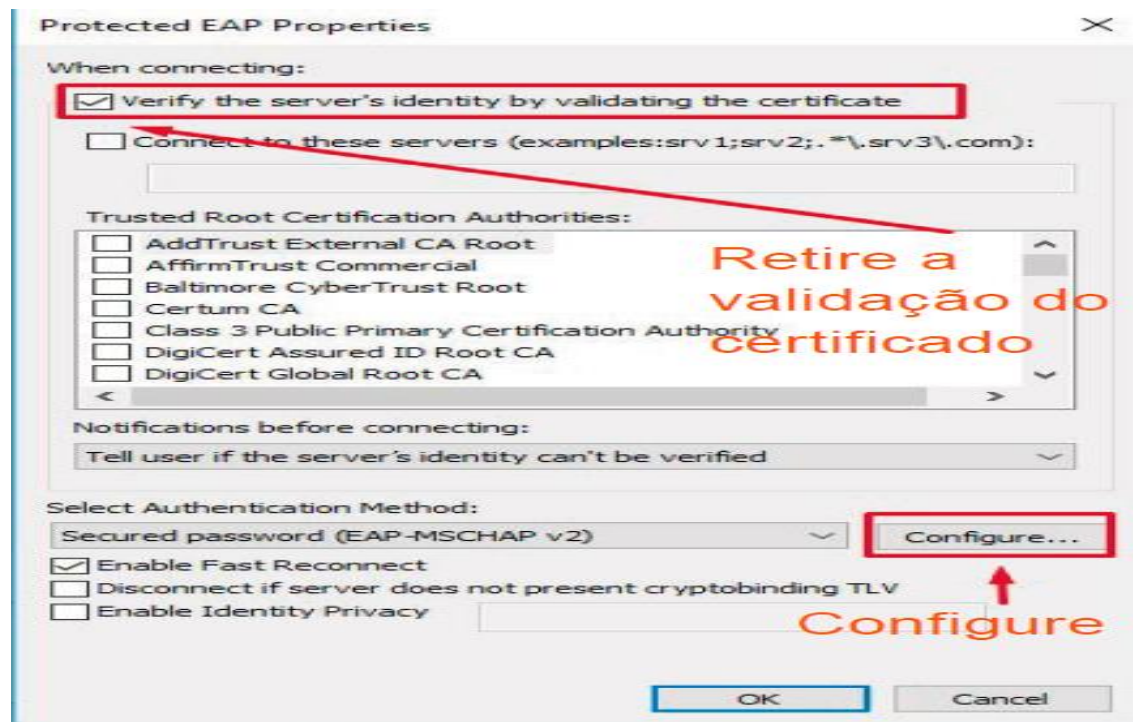
[Change connection settings](#)
Open the connection properties so that I can change the settings.

Altere as definições de ligação

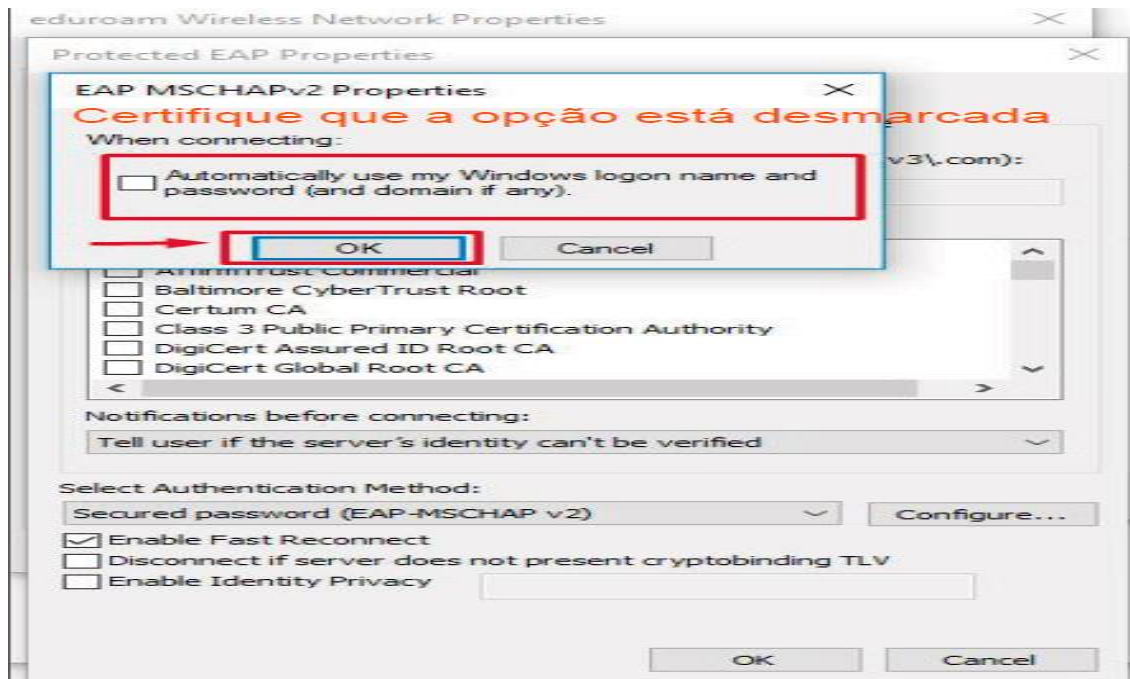
Passo 7



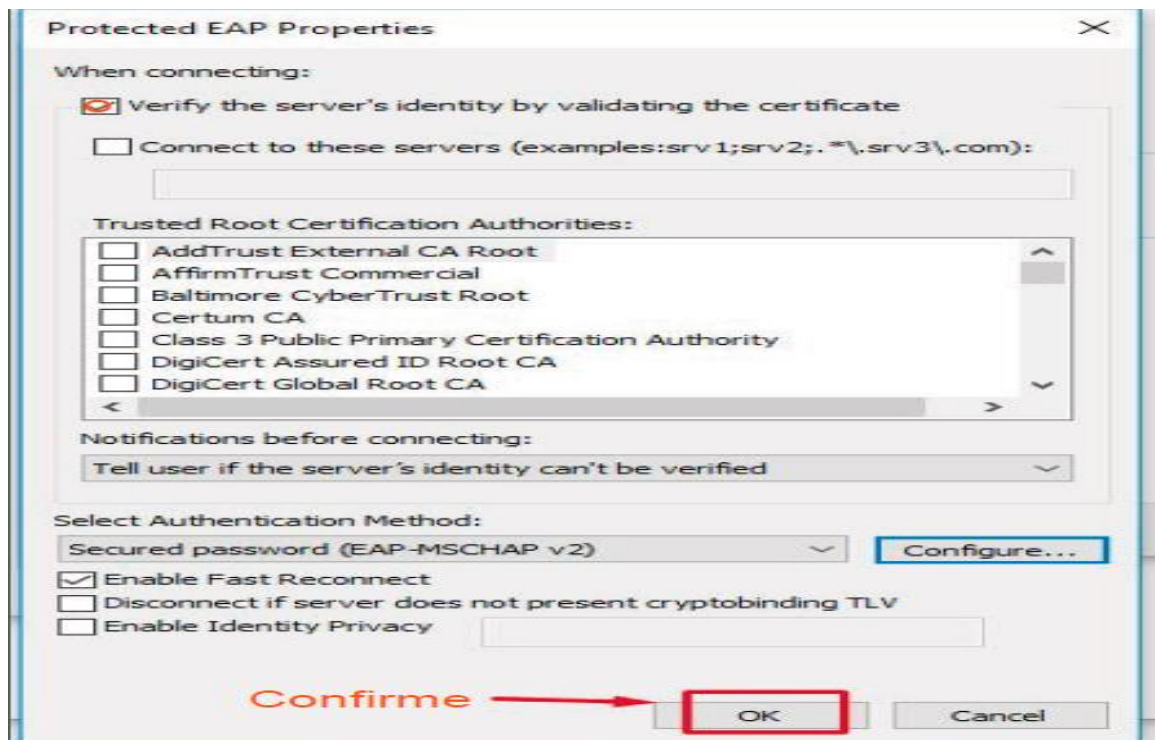
Passo 8



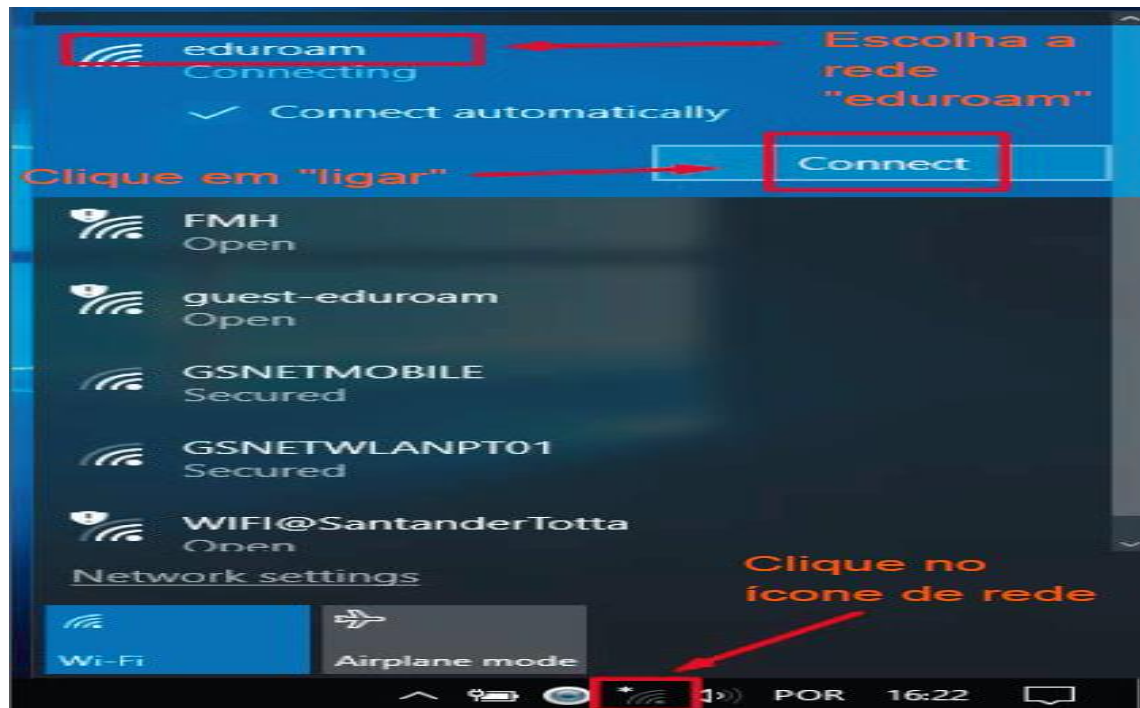
Passo 9



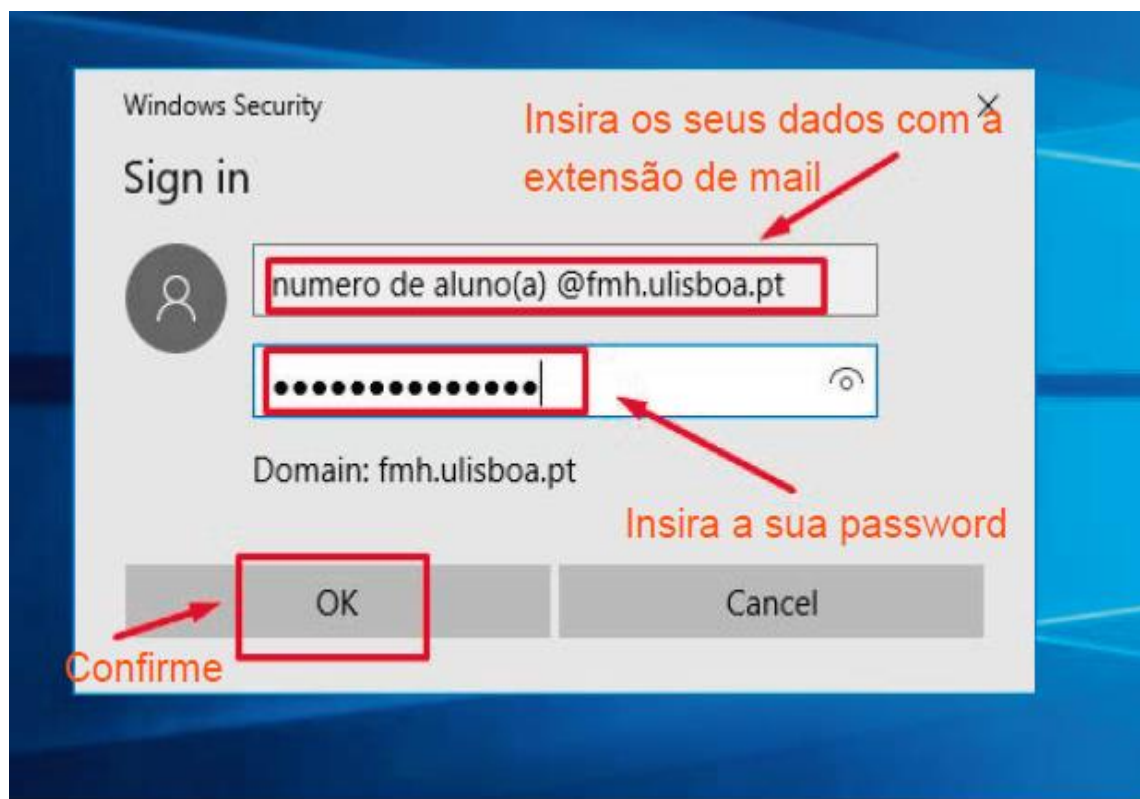
Passo 10



Passo 11



Passo 12



Passo 13

